

## 1. Description

WARMUP's TH114 Series non-programmable thermostats can be used to control ambient or floor temperature. The following models are available:

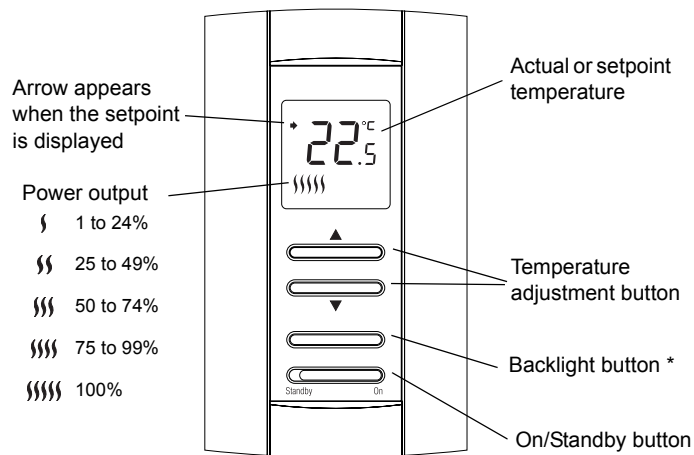
- A model: ▶ controls and displays the ambient temperature

---

- F model: ▶ controls and displays the floor temperature  
▶ uses an external temperature sensor

---

- AF model: ▶ controls and displays the ambient temperature  
▶ maintains the floor temperature within desired limits  
▶ uses an external temperature sensor



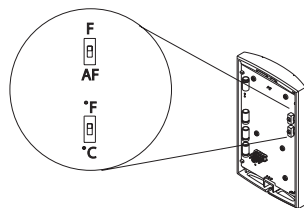
Each thermostat consists of a control module which must be mounted on a PB112 Series power base. For the selection and installation of the power base, refer to its installation instructions.

## 2. DIP Switch Configuration

The DIP switches are located at the back of the control module.

### 2.1 Temperature Display (S1)

To switch between °C and °F.



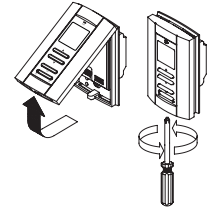
### 2.2 Model (S2)

*Note: Available on certain models only*

- F: To select the F model
- AF: To select the A or AF model

## 3. Installation

- 1 Refer to the installation instructions of the power base.
- 2 Insert the tabs at the top of the control module in the slots at the top of the power base.
- 3 Secure the control module using the captive screw underneath the base.



*Note: Do not obstruct the thermostat's vents.*

## 4. Power-up

As soon as the thermostat is powered, it undergoes a series of tests before displaying the actual temperature.



## 5. Error Messages



The measured temperature is below 0°C. Heating is turned On.



The measured temperature is above 50°C (A or AF model) or 60°C (F model).



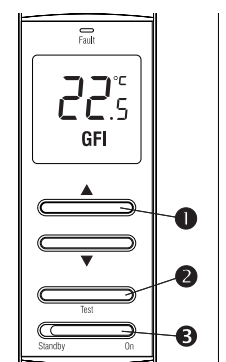
The floor sensor is defective or not properly connected (F model only), or the thermostat is defective.

## 6. GFCI Test

*Note: This procedure must be performed if the thermostat is mounted on a GFCI-equipped power base.*

Test the GFCI immediately after installing the control module, and once a month thereafter.

- 1 Raise the temperature ▲ until the heating power indicator (wavy lines) appears.
- 2 Press the Test button.
- 3 If the test is successful, you will hear a click caused by the GFCI relay tripping. The heating power indicator will disappear, GFI will appear and the Fault light will illuminate. Reset the thermostat by switching it to Standby and back to On.
- 4 If the test has failed, cut power to the heating system from the main electrical panel and call customer service.



*Note: If the Fault light is On during normal operation, cut power to heating system at the main electrical panel and have an electrician verify the installation.*

## 7. Operation

### 7.1 Backlight

When either of the ▲▼ buttons is pressed, the display is lit for 10 seconds. The setpoint appears for 5 seconds, then the actual temperature is displayed.

When the backlight button is pressed, the display is lit for 5 seconds.

### 7.2 Displaying and Setting the Temperature

The thermostat normally displays the actual temperature. To view the setpoint, press once on one of the ▲▼ buttons. The setpoint is displayed for 5 seconds. During the setpoint display, press one of the ▲▼ buttons to change it. To scroll the setpoint faster, press and hold the button.

### 7.3 Setting the Floor Temperature Limits (AF model only)

The thermostat generally turns heating On or Off to control the ambient temperature. However, if the floor temperature drops below the set minimum floor temperature limit or rises above the maximum limit, the thermostat will turn heating On or Off respectively, regardless of the ambient temperature, to maintain the floor temperature within the desired limits.



The minimum and maximum floor temperature limits are factory-set at 10°C and 28°C respectively. To modify the limits, proceed as follows:

- 1 Switch the thermostat to Standby.
- 2 While pressing any button, switch the thermostat back to On to access the floor temperature limit settings.
- 3 Press the Test button briefly to switch between minimum and maximum floor temperature settings.
- 4 Press the ▲▼ buttons to set the desired limit.
- 5 Press the Test button for 3 seconds to save your modifications. After the data are saved, the thermostat displays the actual ambient temperature or “—”.

**Note:** Your modifications are also saved if no button is pressed for 60 seconds.

## 8. Technical Specifications

**Power supply:** Refer to the power base installation instructions.

**Ambient setpoint range (A/AF models):** 5°C to 30°C

**Floor limit range (AF model):** 5°C to 40°C

**Floor setpoint range (F model):** 5°C to 40°C

**Setpoint resolution:** ± 0.5°C

**Display resolution:** ± 0.5°C

**Duty cycle:** Refer to the power base installation instructions.

**Storage:** -20°C to 50°C

## 9. Warranty

### WARMUP HEATING SYSTEMS NZ LTD THREE (3) YEAR WARRANTY

This product is warranted against defects in material and workmanship under normal conditions of use for a period of three years from the date of purchase. During this period, WARMUP will repair or replace the product, if it is defective in normal operating conditions in terms of materials or workmanship, with a new product of equivalent quality at WARMUP's option.

The warranty does not cover costs of transportation, removal, installation or damage caused by misuse or accident. In no event will WARMUP be liable for consequential loss resulting from the installation of the product. Any defective product should be sent with the original invoice to the original installer, or shipped prepaid, insured and sent to the following address:

#### WARMUP Heating Systems NZ Ltd

Copsey Business Park  
20 Copsey Place,  
Avondale, Auckland.

If you have any questions concerning the installation of the TH114, contact our technical support team on:

**Phone:** 09 820-4001 or 0800 WARMUP (927-687)

**Fax:** 09 820-7091

**Email:** info@warmup.co.nz

For more information on our products, visit us at:

[www.warmup.co.nz](http://www.warmup.co.nz)